



■ The cultured marble countertops were replaced with Napolina Limestone and rectangular Kohler sinks and sleek Delta faucets. Octagonal cabinet knobs, polished nickel square tube vanity sconces and mirrors finish the vanity area.

An outdated, 28-year-old master bath is transformed into a spa-like sanctuary.



Make an investment in your home

Kitchen and bath remodels add value and style

By Angela C. Crissman

With return on investment in mind, two of the best areas in the home to improve and remodel are the bathroom and the kitchen. These remodeling projects are the best at recouping their cost and actually adding to the resale value of your house — with an average return between 68-80 percent. Two Houston area companies, Remodeling Concepts Inc. and Craftsmanship by John, completed remodels on a bathroom and kitchen that have not only added to the usefulness of the space, but also provided an updated look.

Remodeling Concepts Inc., owned by Jim Nowlin, has been in business since 1988. The company has received five Lone Star Awards for excellence in remodeling, a Chrysalis Award for Best Whole House Under \$200,000, and a Prism Finalist Award for Remodeling Design of the Year.

Nowlin’s company teamed with Lynne T. Jones, ASID, who was both the client and interior designer on this project, to renovate Jones’ 28-year-old master bathroom. Jones used her expertise to transform her outdated master bath into a spa-like space that is also more functional.

To begin, the carpet was removed and replaced with 12-inch by 24-inch rectangular honed Crema Marfil marble field tiles from Daltile, giving the room a more clean lined appearance. The focal point of the room, however, is a freestanding tub from Victoria & Albert/Toulouse purchased through Fixtures & Fittings, which replaced a large and unsightly cultured marble Jacuzzi tub that was located in the middle of the room. Nowlin’s team had to reroute the plumbing to accommodate the new tub and faucet that comes out of the floor. The contemporary faucet in a polished chrome finish is Huntington Brass/Versailles from Kiva Kitchen & Bath Showroom. One-inch square Honey Onyx mosaic tiles by Thorntree Slate & Marble were placed underneath the tub to create a 4-foot by 6-foot “rug” on the floor.

The back wall to the existing shower was removed to enlarge the space and replaced with a frameless shower enclosure from Meyerland Glass & Mirror. The walk-in shower walls consist of 12-inch Crema Marfil marble tiles, in a brushed finish, from Thorntree Slate & Marble that were laid on a diagonal, along with 2-inch tumbled marble tiles by Daltile on the floor. Accent tile used on the middle of the shower wall are 1-inch honey onyx mosaics, which are surrounded by a picture frame molding of Napolina Limestone, all from Thorntree. The new look creates a



Details



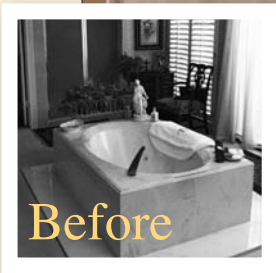
PHOTOGRAPHY BY LYNSEY JONES, LYNSEY CREATIVE



PHOTOGRAPHY BY LYNSEY JONES, LYNSEY CREATIVE



PHOTOGRAPHY BY LYNSEY JONES, LYNSEY CREATIVE



Before

- The walk-in shower walls consist of 12-inch Crema Marfil marble tiles laid on a diagonal along with 2-inch tumbled marble tiles on the floor. Accent tiles are 1-inch honey onyx mosaics, which are surrounded by a picture frame molding of Napolina Limestone. ✨ Rectangular Kohler sinks and sleek Delta faucets from Ferguson Bath, Kitchen and Lighting Gallery complement the contemporary look. ✨ A freestanding tub from Victoria & Albert/Toulouse with a contemporary faucet in a polished chrome finish take center stage in the new master bath.

“frame” on the wall of the shower. Three different types of Kohler shower heads, all from Ferguson Bath, Kitchen and Lighting Gallery in polished chrome, complete the shower.

The cultured marble countertops were replaced with Napolina Limestone from Daltile that was fabricated by Bolfin Brothers Marble & Granite. The existing cabinet was sanded and repainted and then refitted with new panel doors, concealed hinges, and new drawer fronts as well as full extension slides for full access of the drawers. Jones saw the limestone slab a year before she began this project, and loved it, and just knew it would be the perfect addition for her master bath. Rectangular Kohler sinks and sleek Delta faucets from Ferguson, along with octagonal cabinet knobs, from Lighting, Inc. Plumbing & Hardware, complement the

contemporary look. In addition, polished nickel square tube vanity sconces from Circa Lighting and mirrors from Meyerland Glass & Mirror finish the vanity area. All hardware used in the space is either polished nickel or polished chrome.

To continue with the spa-like feel, an existing linen closet was converted by adding glass shelves as well as an overhead light to create a display area. Closed storage with European hinges were incorporated for a clothes hamper. To finish the look, crown molding was added and the walls were painted Benjamin Moore Jamesboro Gold.

In an effort to increase energy efficiency, reduce noise, and cut energy costs, new windows and a 9-foot glass sliding door from RAM Industries were installed, providing a view of the atrium, which is located just

outside the bathroom. Another energy efficient product used in the remodel was a Kohler water conservation toilet purchased through Ferguson.

The closet was also gutted and redesigned by Remodeling Concepts to make better use of the existing space. Twelve-inch Crema Marfil tiles from Daltile were installed on the floor and track lighting from Lighting Unlimited was used. Specialty hardware such as valet rods, stainless steel hamper drawers, and pull-out belt racks, all from Cornerstone Hardware, were incorporated to help with organization. The entire project took six weeks to complete and Jones is thrilled with the final result of her new, tranquil space.

KITCHEN REMODEL

John Gillette, owner of Craftsmanship by John, is not only the current president of the



One of the biggest challenges in this kitchen, which was last remodeled in the '70s, was a lack of space.

PHOTOGRAPHY BY HARRY DURHAM

Remodelors™ Council but has received numerous awards including Top 100 Remodelers in the U.S., winner of the Big 50, and Chrysalis Award for Design to name a few. In addition, Gillette has earned the Certified Graduate Remodeler, Graduate Master Builder and Citizens Aging In Place Specialist designations, bestowed by the National Association of Home Builders.

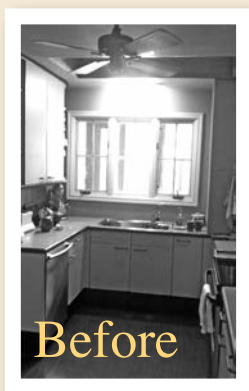
During this particular remodel, Gillette renovated an outdated kitchen in a 43-year-old

West University home by opening up the space, making it more user-friendly, and incorporating green products into the design. The homeowner, who has worked with Gillette on numerous remodeling projects, is very eco-conscious and wanted to utilize as many environmentally friendly products as possible.

One of the biggest challenges in this kitchen, which was last remodeled in the '70s, was a lack of space. As a result, an interior wall and

- As part of the eco-friendly design, reclaimed red oak select wood planks and recessed LED lights were incorporated into the design plan.

Details



The newly renovated kitchen has a clean, contemporary look that is complemented by environmentally friendly and energy-efficient products.



■ Caesarstone countertops in Nougat and white ice recycled glass tiles placed on the backsplash add a sophisticated and sleek look to the kitchen. ✨ The refrigerator and dishwasher were both relocated during the project to make the room more functional and efficient. ✨ Contemporary style bamboo cabinets were installed using Plyboo bamboo end grain amber 5-ply with no added Urea-formaldehyde.

closet were removed to make the room bigger. To utilize every inch of space that was available, the design plan also incorporated closet storage under the stairs with cabinet fronts and the installation of a tankless water heater.

Dated white cabinets with oak trim were replaced with contemporary style bamboo cabinets using Plyboo bamboo end grain amber 5-ply with no added Urea-formaldehyde. Vertical grain was used for the top cabinets and parquet was utilized on the base cabinets. LED undermount cabinet lighting provides directed task lighting on the countertops.

Designer Kelly Gale Amen with Kelly Gale Amen Design was instrumental throughout the project with design ideas and product selection including the use of bamboo vertical grain paneling on the walls.

Caesarstone countertops in Nougat add a sophisticated and sleek look to the kitchen. These engineered stone countertops are composed of up to 93 percent quartz and feature a waterfall edge. Four-inch by eight-inch white ice recycled glass tiles were placed on the backsplash. To complete this essential work triangle, a new stainless steel faucet with soap dispenser from Waterstone was installed as well as a Blanco stainless steel single bowl undermount sink with integrated drain board.

New appliances include a Dacor drop-in gas cooktop with a Zephyr vent hood in stainless featuring halogen lamps, a stainless steel KitchenAid refrigerator, KitchenAid convection oven, and KitchenAid oven. The refrigerator and dishwasher were both relocated during the project to make the room more functional and efficient. A new addition to this kitchen is the dual zone KitchenAid wine cooler with 46-bottle capacity that is located near the peninsula's built-in workspace.

To continue with the eco-friendly design, the vinyl flooring was replaced with reclaimed red oak select wood planks. Recessed LED lights in the ceiling were installed as well as Lutron remote-controlled, pre-programmed dimmers and switches that are energy-efficient. To add more natural lighting, the window above the sink was replaced with a larger metal clad casement-style window from Jeld-Wen in a natural pine finish.

A floor-to-ceiling custom-built china cabinet, made of bamboo with glass fronts and Xenon strip lighting, was also added in the space. The newly renovated kitchen has a clean, contemporary look that is complemented by environmentally friendly and energy-efficient products. ●



minkaAire.

**CEILING FANS
UNDER CABINET
LANDSCAPE LIGHTING
INTERIOR/EXTERIOR LIGHTING**

We would like to invite you into our 7,000 square foot showroom to view our extensive display of over 100 manufacturers



Mon-Fri 8:30-6:00,
Sat 10-5
(& by appointment after 6:00)



UL UNIVERSAL LIGHTS, INC.

**4711 S. MAIN STREET STAFFORD, TX 77477
281-491-0600 • www.universallights.com**



**Kelly Gale Amen
Interior Design Services**



**713.522.1410
KGA.net**